

Multi Purpose DP Support Vessel "Zwerver III"



Dimensions:

Length o.a.	: 35.10 m
Breadth mid.	: 15.00 m
Depth ½ L	: 4.07 m
Draught min.	: 2.60 m
Draught max.	: 3.00 m
Free deck space	: 300.00 m ²
Max. deck load	: 10.00 t/m ²

Tank capacities:

Fuel oil	: 285.00 m ³
Fresh water	: 50.00 m ³
Lub oil	: 8.00 m ³
Hydraulic oil	: 8.00 m ³
Dirty oil	: 9.00 m ³
Grey water	: 22.00 m ³
Ballast water	: 21.00 m ³

Propulsion system:

Main engines	: 3 x Mitsubishi S12R-MPTK
Total output	: 2.820 kW
Gearboxes	: 2 x Reintjes WAF 665
Propulsion	: 2 x f.p. propellers in nozzles
	: 2 x Ø 2000 mm
Bow thrusters	: 1 x HRP Thruster WM-6111 Ø 1750 mm
	: 2 x HRP 3001 TT, 220 kW each

Performances:

Speed	: Max. 10.5 knots
Bollard Pull	: 56.8 T

Auxiliary systems:

Generator sets	: 2 x Mitsubishi 6D16T 120 kVA (1 Silenced)
	: Both sets deliver 230/400 V – 50 Hz
Hydraulic power	: 2 x Mitsubishi S6R-MPTA – 570 kW each
Transfer pumps	: Fuel & fresh water 60 m ³ /hr, including Transfer hoses on reels and indicators
Air compressor	: Atlas-Copco GA 30+FF, 5000 ltr/min, with connections on deck/store/engine room
Fresh water maker	: 5m ³ /24 hr

DP-1 equipment:
NAVIS NAV DP-4000

Classification:
Bureau Veritas I *Mach Tug Unrestricted Navigation AUT-UMS
– Dynapos 1 AM/AT – Ice Class 1C

Deck equipment:

Deck crane fore	: HS Marine Crane AKC-370 HE3. Lifting 10 T @ 20 m, winch 13T
Deck crane aft	: HS Marine Crane AKC-370 HE3. Lifting 10 T @ 20 m. Both cranes remote controlled
Anchor-handling winch	: Wire capacity 1000 m x Ø 64 mm; 200 T pull, 250 T hold capacity
Towing winch	: Wire capacity 1000 m x Ø 48 mm; 100 T pull, 200 T hold capacity
Tugger winches	: 3 x 100 m x Ø 22 mm; 15 T pull
Towing pins/shark jaws fore	: 1 set 200 T SWL
Guide pins fore	: 2 x hydraulically controlled; 150 T SWL
Towing pins/shark jaws aft	: 1 set 200 T SWL
Guide pins aft	: 2 x hydraulically controlled; 150 T SWL
Bow roller	: 8000 x 2000 mm; 250 T SWL
Stern roller	: 4000 x 1300 mm; 250 T SWL
Spud poles	: 2 x Ø 600 mm, 15 m length
Moonpool	: Ø 1000 mm
Bowdoor	: Hydraulically operated bowdoor, rises deck level with 1000 mm to avoid seawater/swell flushing deck.
Container fittings	: 24 fittings flush in deck

Accommodation:
Comfortable accommodation for 12 persons in 7 cabins. All cabins, galley, office and wheelhouse are heated and air conditioned.

Navigational equipment: equipped for area A3

Radar systems	: JRC JMA-5300Mk2 ARPA
	: JRC JMA-5300Mk2 ARPA
Magnetic compass	: Cassens & Plath Reflecta 4
Gyro compass 1	: Alpha minicourse
Gyro compass 2	: Alpha minicourse
D-GPS 1	: Veripos LID3-G1
D-GPS 2	: Saab DGPS-R4
D-GPS 3 + AIS	: Saab DGPS/AIS-R4
Comm. GMDSS equipment	: 3 x VHF/DSC Sailor 6222
	: 1 x MF/HF Sailor 6300
	: 2 x Inmarsat-C Sailor 6110 + LRIT
Echo sounder	: JRC JFE-380
Speed log	: JRC JLN-205
Auto-pilot	: included in DP-1 system
Navtex	: JRC NCR-333
ECDIS	: Alphachart T ECDIS (Transas)
Searchlights	: 2 x Seematz 2000 W

Suitable projects for this vessel

Wind farm-/Renewable Energy projects,

vessel can act as:

- General support vessel for installation of turbines/floating objects;
- Anchor-handling vessel/Towing tug;
- Cable lay/support vessel;
- Maintenance support vessel for turbines/floating objects;
- Supply vessel;
- Access vessel to turbines, i.e. "Ampelmann®" system can be installed;
- Diving support vessel;
- Survey/ROV vessel.

Dredging projects,

vessel can act as:

- General support vessel for assistance of dredging vessels;
- Anchor-handling vessel/Towing/Pusher tug;
- Hose handling/maintenance vessel;
- Diving support vessel.

Offshore installation projects,

vessel can act as:

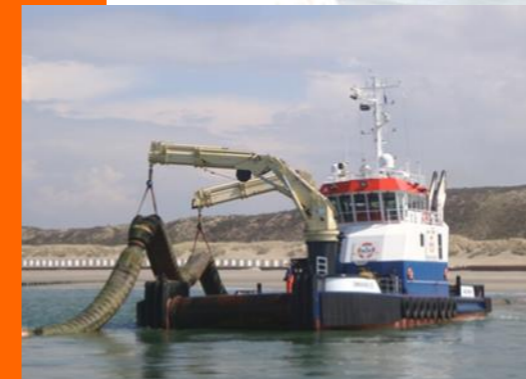
- General support vessel;
- Anchor-handling vessel/Towing tug;
- Cable lay support vessel;
- SPM-buoy installation vessel;
- Maintenance support vessel for platforms/SPM buoys etc.;
- Supply vessel;
- Hose handling/maintenance vessel;
- Access vessel to platforms, i.e. "Ampelmann®" system can be installed;
- Diving support vessel;
- Survey/ROV vessel.

References:

An extensive reference list of dredging- and marine construction companies shows the many years of experience in the offshore industry.

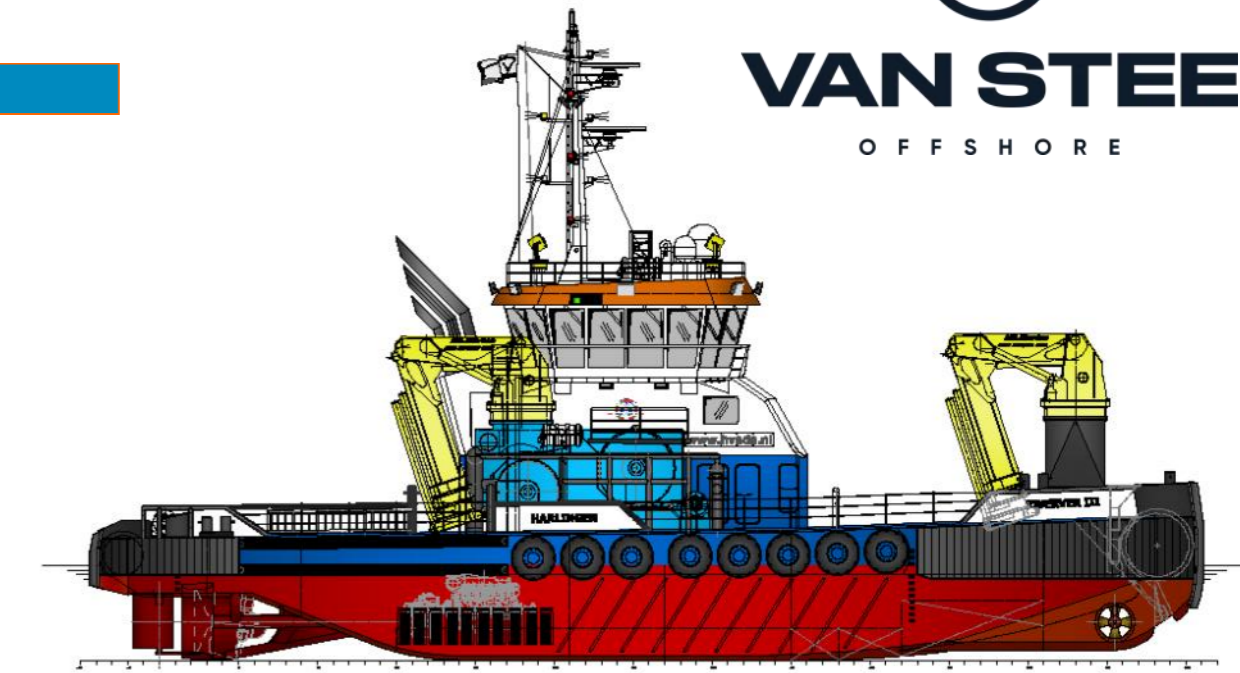
Examples are:

- Allseas Marine Contractors
- DEME N.V.
- Van Oord Offshore & Marine Contractors BV
- Van Oord Offshore Wind Projects BV
- Boskalis BV
- Saipem SA
- Tideway Marine & Offshore Contractors BV
- Mc Dermott International
- Jan de Nul NV
- Prysmian Powerlink Services Ltd.
- C-Ventus Offshore Windfarm Services BV
- Modus Seabed Intervention Ltd.

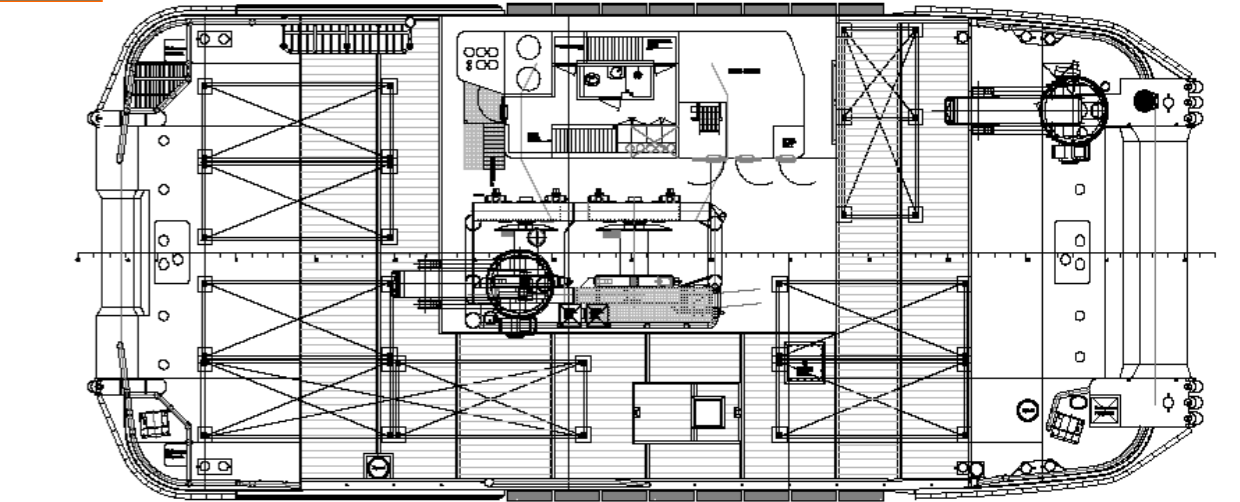


Overview

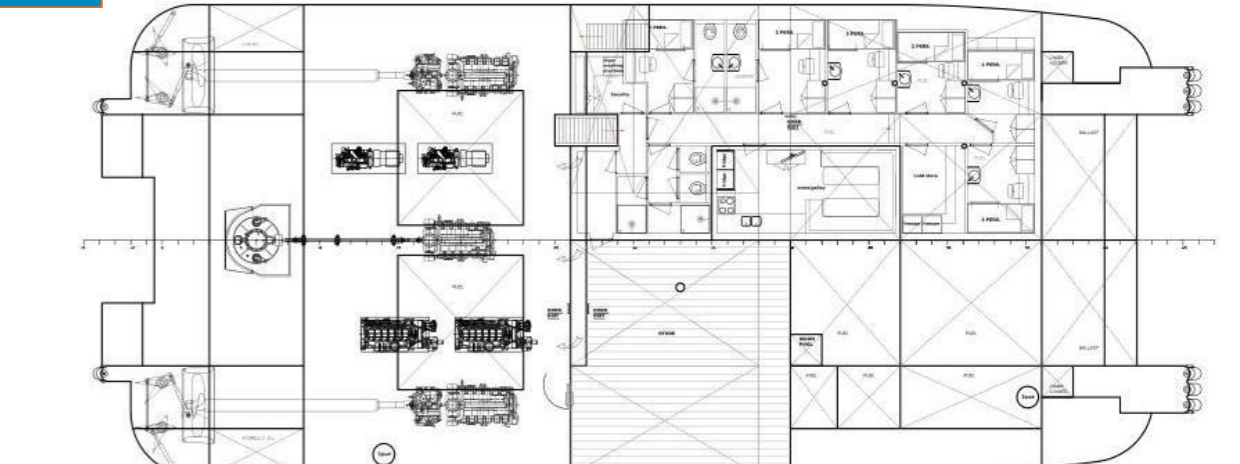
Side view



Deck view

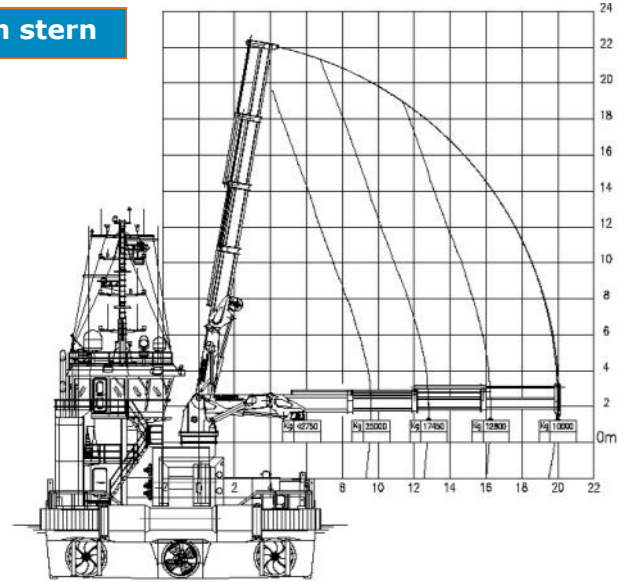


Tank Top



Crane diagrams

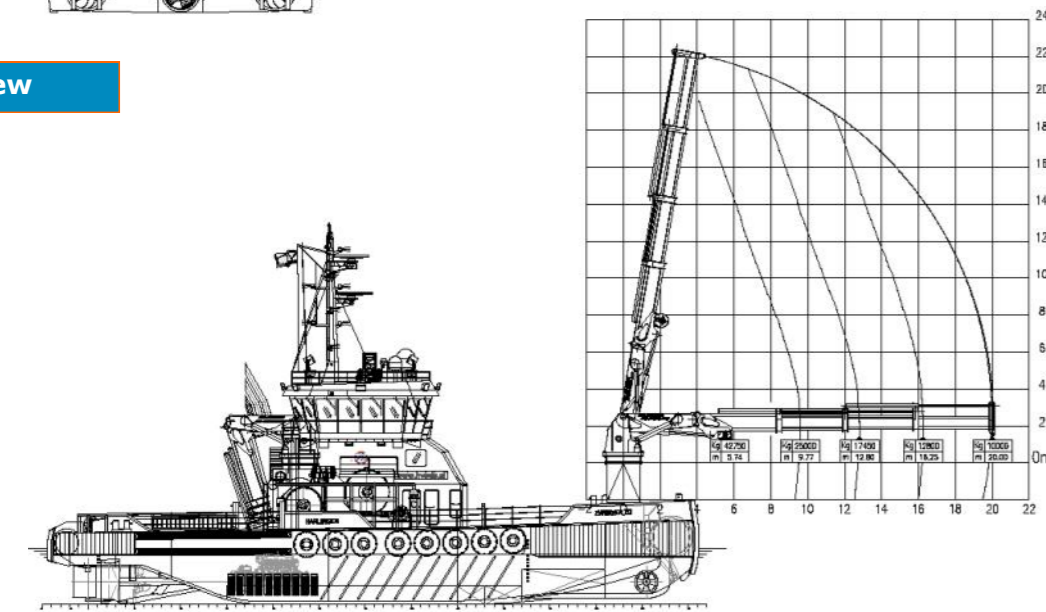
View on stern



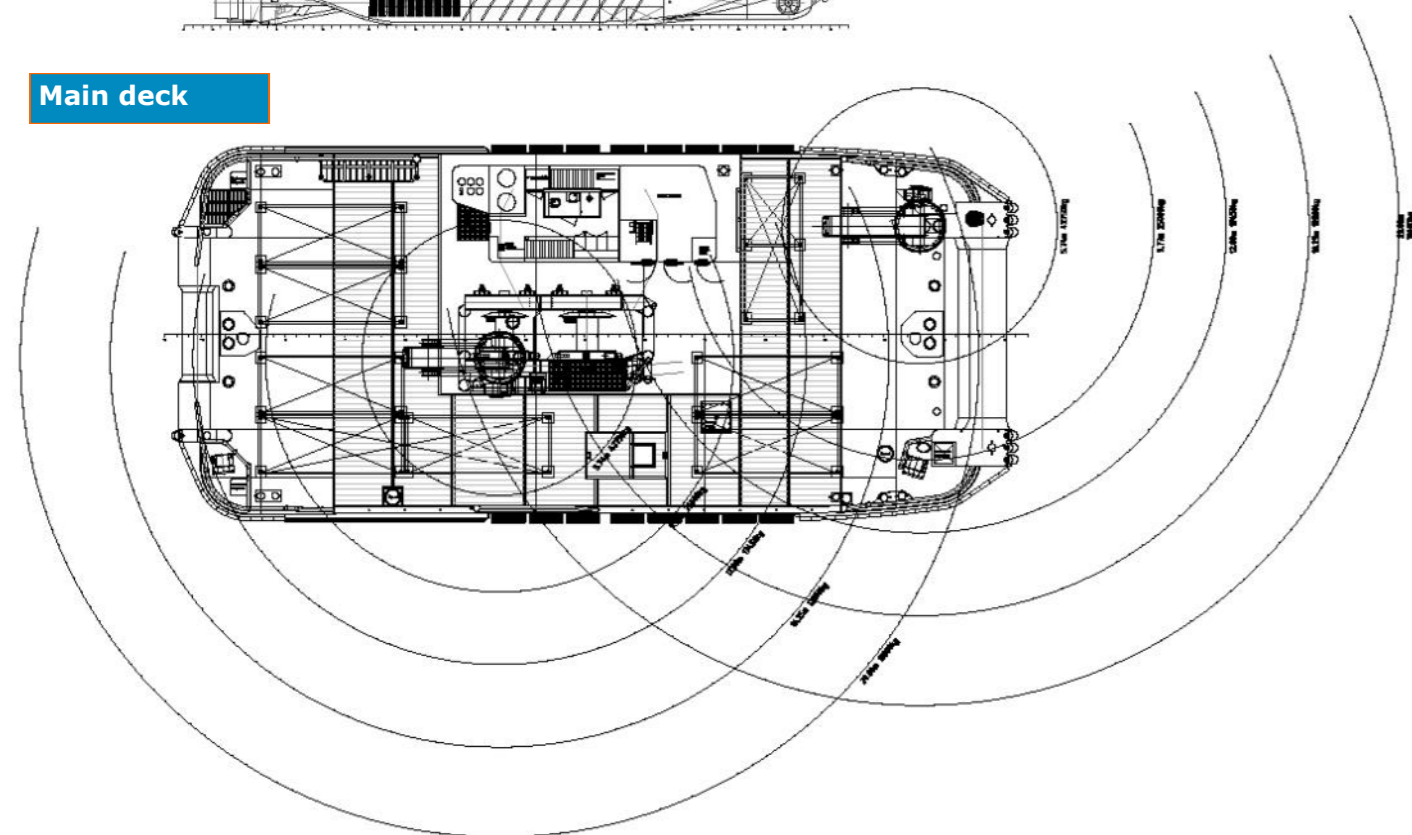
Lifting capacities

Distance from Base	HS Marine AKC 370/20 HE3 with 13 T winch kit	HS Marine AKC 370/20 HE3 with Single hook
5.74 m	13.000 Kg	42.750 Kg
9.77 m	13.000 Kg	25.000 Kg
12.80 m	13.000 Kg	17.450 Kg
16.25 m	12.520 Kg	12.800 Kg
20.00 m	9.720 Kg	10.000 Kg

Side view

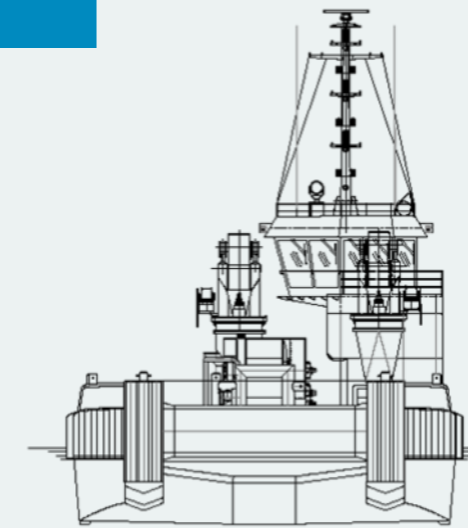


Main deck

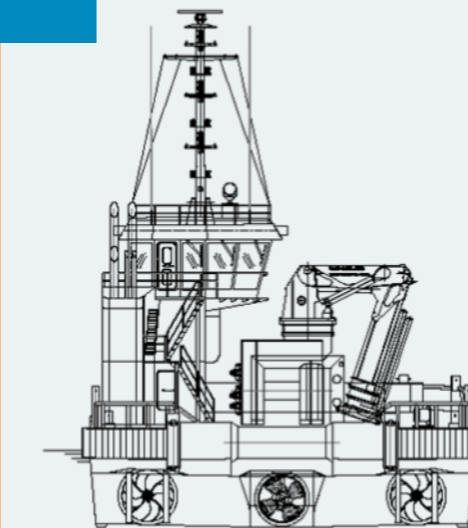
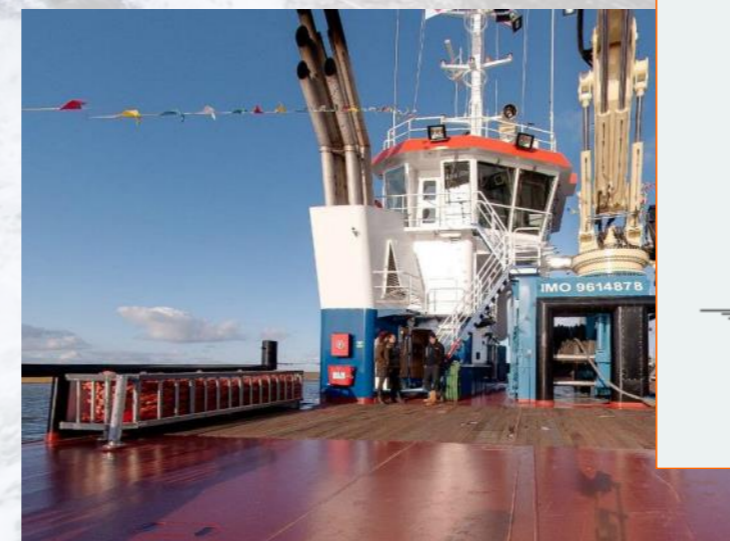


Front and stern views

Front view



Stern view



"ZWERVER III"
Multi Purpose DP Support
Vessel



VAN STEE OFFSHORE

Vijver 12 • 8861 BS Harlingen • The Netherlands

Tel. +31 (0) 653663292

info@vansteeoffshore.com • www.vansteeoffshore.com