

# Multi Purpose DP2 Support Vessel "ZWERVER V" Shallow Draft



**Dimensions:**  
 Length o.a. : 80.38 m  
 Breadth mld. : 20.00 m (20,64 m including fendering)  
 Depth ½ L : 5.50 m  
 Draught min. : 3.00 m  
 Draught max. : 4.20 m  
 Free deck space : 800.00 m<sup>2</sup>  
 Max. deck load : ±1800-2200 T, 10.00 t/m<sup>2</sup>  
 GRT / NT : 3807 T / 1142 T  
 Flag : Dutch

**Tank capacities:**  
 Fuel oil : 658.00 m<sup>3</sup> (Cargo + domestic)  
 Fresh water : 622.00 m<sup>3</sup> (Cargo + domestic)  
 Ballast water : 1.060,00 m<sup>3</sup> (approx.)  
 Lub oil : 8.00 m<sup>3</sup>  
 Hydraulic oil : 8.00 m<sup>3</sup>  
 Dirty oil/Sludge/Bilge : 8.00 m<sup>3</sup> / 7.60 m<sup>3</sup> / 28.00 m<sup>3</sup>  
 Sewage/Grey water : 48.00 m<sup>3</sup> / 48.00 m<sup>3</sup>  
 Foam : 48.00 m<sup>3</sup>

**Propulsion system:**  
 Total propulsion : 2.800 kW Diesel-Electric  
 Main generators : 4x Caterpillar C32 @ 940 kW each  
 2x Caterpillar C18 @ 565 kW each  
 Propulsion : 2x Schottel Azimuth 1.400 kW F.P.P. Ø 2200 mm  
 Bow thrusters : 1x Schottel TT @ 765 kW Ø 1540 mm  
 1x Schottel DD-Azimuth @ 800 kW Ø 1700 mm

**Performances:**  
 Max. Speed : 11,0 knots  
 Bollard Pull : approx. 60,0 T

**Auxiliary systems:**  
 Electrical systems : All gensets deliver 3x 690V/3x440V – 60 Hz  
 Emergency Gen : 1x Caterpillar C7.1 ACERT DITA 138 kW  
 Hydraulic power : 2x 160kW HPU, 4x 90kW HPU  
 Transfer pumps : Fuel & fresh water 15 – 80 m<sup>3</sup>/hr, including Transfer hoses on reels and indicators  
 Air compressor : 4000 ltr/min, with connections on deck/store/ER  
 Fresh water maker : 10 m<sup>3</sup>/24 hr

**DP2 equipment:**  
 Kongsberg K-POS DP-22 Dynamic positioning system, Spottack monitor (laser Reference system)

**Optional :** Taut wire, USBL

**Deck equipment:**  
 Deck crane Midships : Heila HLRM 90.4S Lifting 5.4 T @ 12.72 m  
 4 T Single fall, 40 mtr wire.  
 Deck crane PS Aft : Heila HLRM 1000 / 6S. Lifting 13.5 T @ 29.88 m  
 20 T lifting single fall, 80-160 mtr wire  
 40 T lifting double fall  
 AHC (single fall only)  
 Offshore crane SB Aft : Scaldon OKC 100-30  
 (from Q2-Q3 2024) 100 T @ 10 m, SS3 (AHC)  
 50 T @ 20 m, SS3 (AHC)  
 30 T @ 30 m, SS3 (AHC)  
 Winch : 50 T AHC Single Fall  
 CT 5 T - 10 T  
 Wire capacity 400 m  
 Aux Winches : 5 T main Aux winch and 2 tigger winches  
 Wire capacity 180 m  
 Man-riding 2.5 T

**Tugger winches :** 2x 10 T pull, 15 T Hold  
**4-pt mooring :** 4x 1000 m x Ø 40 mm wire  
 60 T pull  
**Optional :** 4x 5 T Delta Flipper + pennant buoys  
 7000 x 2000 mm; SWL 150 T  
 2x Ø800 mm  
 Boatlanding : to be used on Starboard or Portside  
 FIFI-1 : FFS 3750 m<sup>3</sup>/hr - 2x 1200 m<sup>3</sup>/hr monitors on stern - 1x  
 300 m<sup>3</sup>/hr foam - Water spray  
 FRC : 1x FRC with inboard diesel engine, 12 pax  
 Workboat (Optional) : 1x Jet-driven workboat available

Container fittings flush in deck, removable railings on Starboard, Portside and stern.  
**Accommodation:**  
 Comfortable heated/airconditioned accommodation for 60 persons in 33 cabins.  
 4 x Single berth cabins  
 2 x Single Officer cabins  
 27 x Double berth cabins  
 VSAT/5G and Sat-TV on board.  
 Large client office's and survey desks available.

**Navigational equipment:** equipped for area A3, Kongsberg IBS system

**Classification:**  
 Bureau Veritas I \*Mach, \*AUT-UMS, \*Unrestricted Navigation, Offshore support vessel, Fire Fighting 1 with water spray, Lifting-ALM, Diving Support, SP(60), Cleanship, Dynapos AM/AT-R, Strengthbottom, Inwatersurvey, COMF-NOISE 3, COMF-VIB 3, Green Passport EU

## Suitable projects for this vessel

Wind farm-/Renewable Energy projects, vessel can act as:

- Walk-to-Work vessel/Offshore Access/Maintenance support vessel for turbines, platforms and other floating equipment;
- Diving support vessel on 4-pt mooring or on DP-2;
- General support vessel for installation of turbines/floating objects;
- Anchor-handling vessel/Towing tug;
- Pre-Lay Grapnel Runs (with low and high tow-forces);
- Route clearance / Boulder removal;
- Cable-/Pipe lay vessel;
- Cable repair vessel;
- Supply vessel;
- Survey-/ROV support vessel;
- Cable burial/trenching;
- Cable inspections;
- Pipeline inspections;
- Mattress installations Pre-lay/Post-lay;
- CPT/Vibrocore operations;
- Beach pull operations > Vessel can ground out!



Offshore construction projects, vessel can act as:

- Walk-to-Work vessel/Offshore Access/Maintenance support vessel for turbines, platforms, SPM buoys and other floating equipment;
- Diving support vessel on 4-pt mooring or on DP-2;
- General support vessel;
- Anchor-handling vessel/Towing tug/push-pull tug;
- Cable-/Pipe lay vessel;
- SPM-buoy installation vessel;
- Supply vessel;
- Hose handling/maintenance vessel;
- Survey-/ROV support vessel;
- Cable burial/trenching;
- Cable inspections;
- Pipeline inspections;
- Mattress installations Pre-lay/Post-lay;
- CPT/Vibrocore operations;
- Beach pull operations > Vessel can ground out!



## References:

An extensive reference list of dredging- and marine construction companies shows the many years of experience in the offshore industry. Examples are:

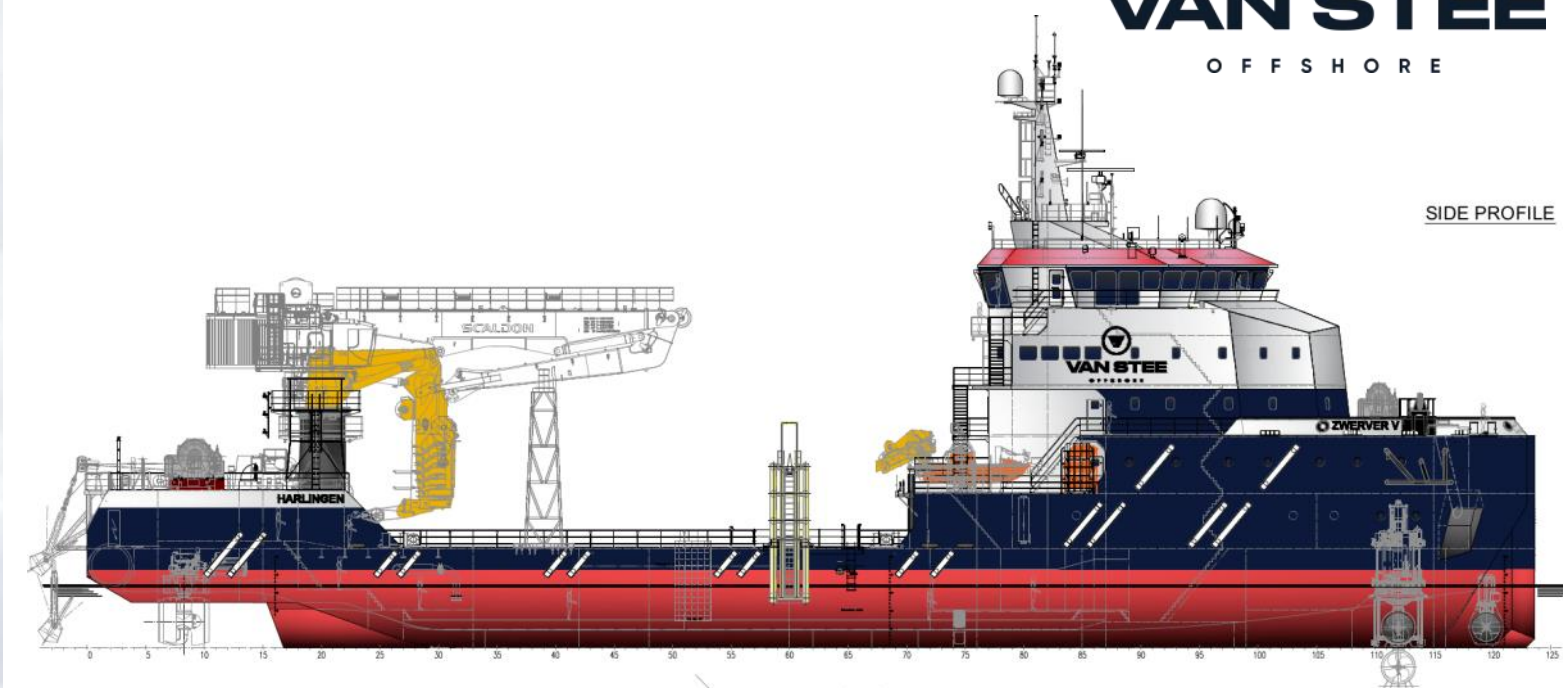
- Allseas Marine Contractors
- DEME NV
- Van Oord Offshore & Marine Contractors BV
- Van Oord Offshore Wind Projects BV
- Boskalis BV
- Saipem SA
- Tideway Marine & Offshore Contractors BV
- Mc Dermott International
- Jan de Nul NV
- Prysmian Powerlink Services Ltd.
- C-Ventus Offshore Windfarm Services BV
- Modus Seabed Intervention Ltd.



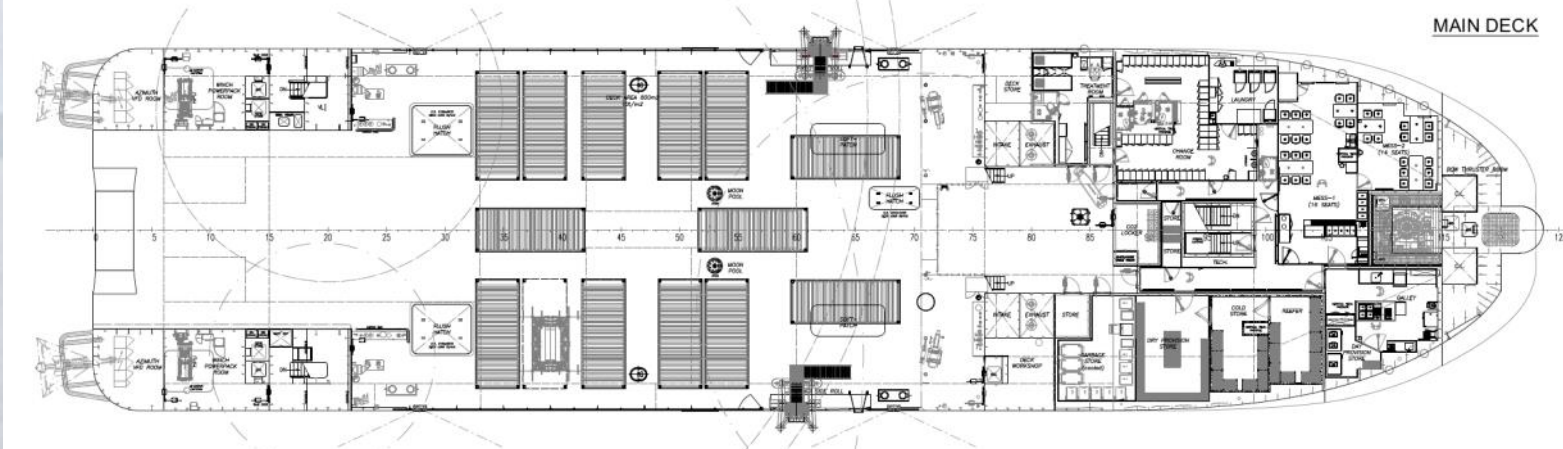
## Overview/drawings



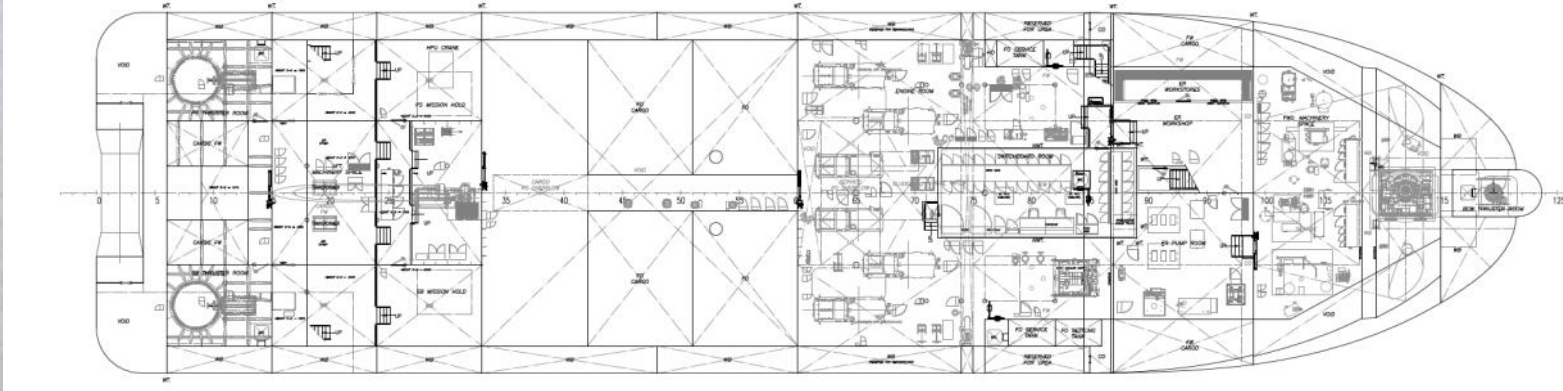
**VAN STEE**  
OFFSHORE



### Deck Lay-out



### Below Deck Lay-out



**VAN STEE**  
OFFSHORE

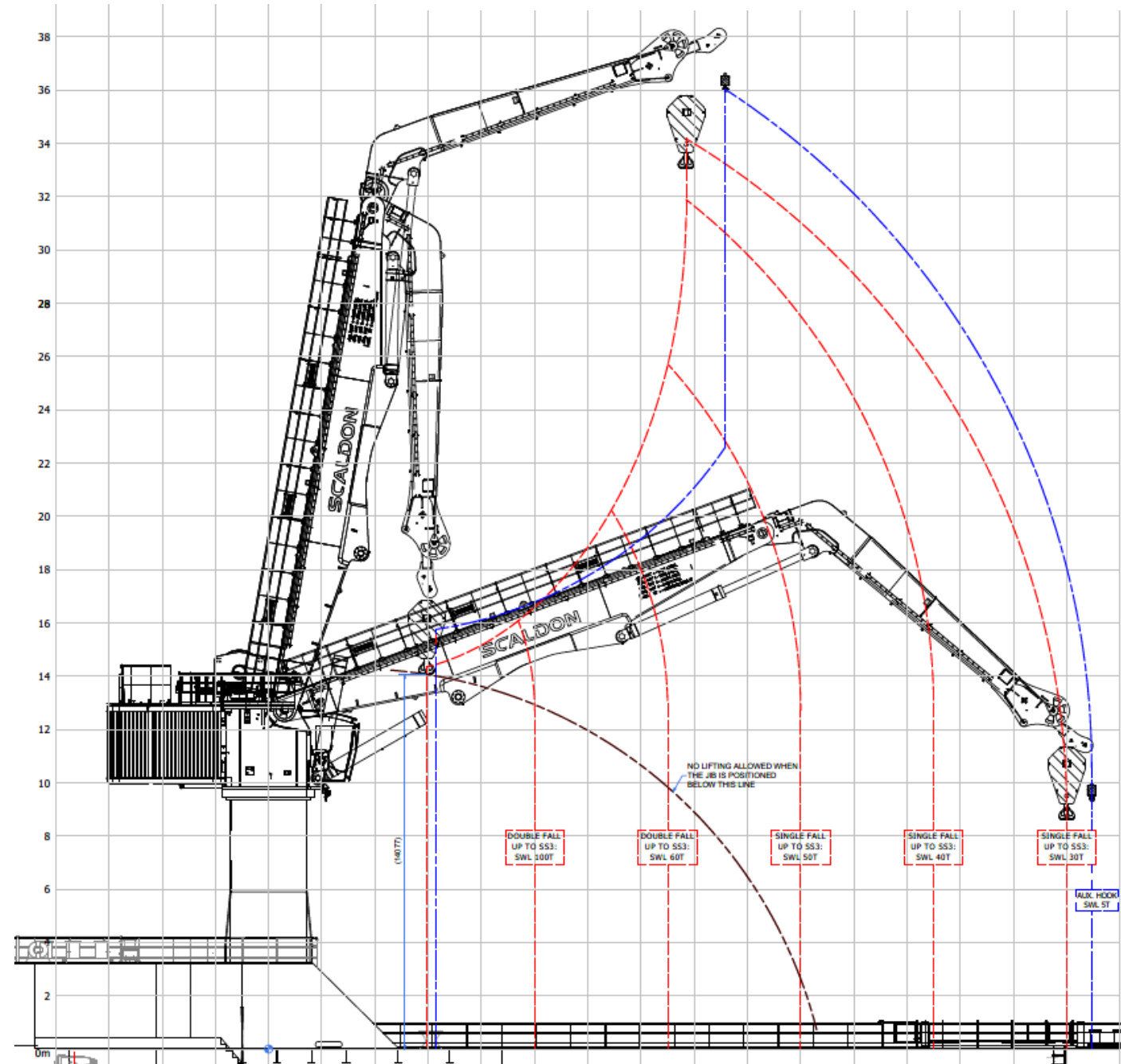
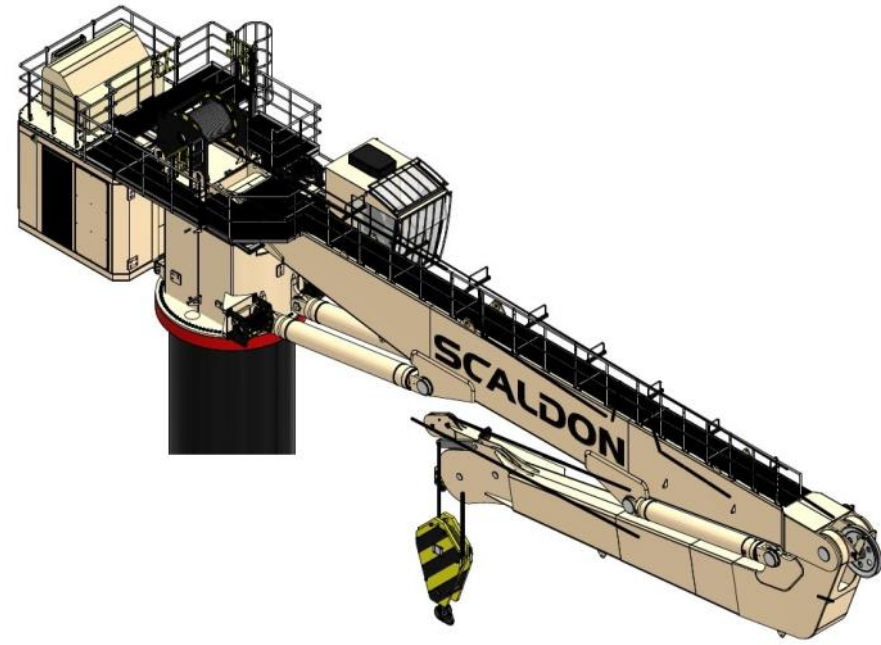
**VAN STEE OFFSHORE**  
 Nieuwe Visserhaven 13 • 8861 NX Harlingen • The Netherlands  
 Tel. +31 (0) 653663292  
 info@vanstreeoffshore.com • www.vanstreeoffshore.com

# Crane drawings/diagrams Starboard side (Provisional)

**Lifting capacities SB aft Offshore crane - AHC**

**Scaldon OKC 100-30 (From 2024)**

Distance from Base	AHC-winch, Single Fall (SS3)	Winch, Double Fall (SS3)
10.00 m	50.000 Kg	100.000 Kg
15.00 m	50.000 Kg	60.000 Kg
20.00 m	50.000 Kg	50.000 Kg
25.00 m	40.000 Kg	40.000 Kg
30.00 m	30.000 Kg	30.000 Kg



# Crane drawings/diagrams Port side aft and midships

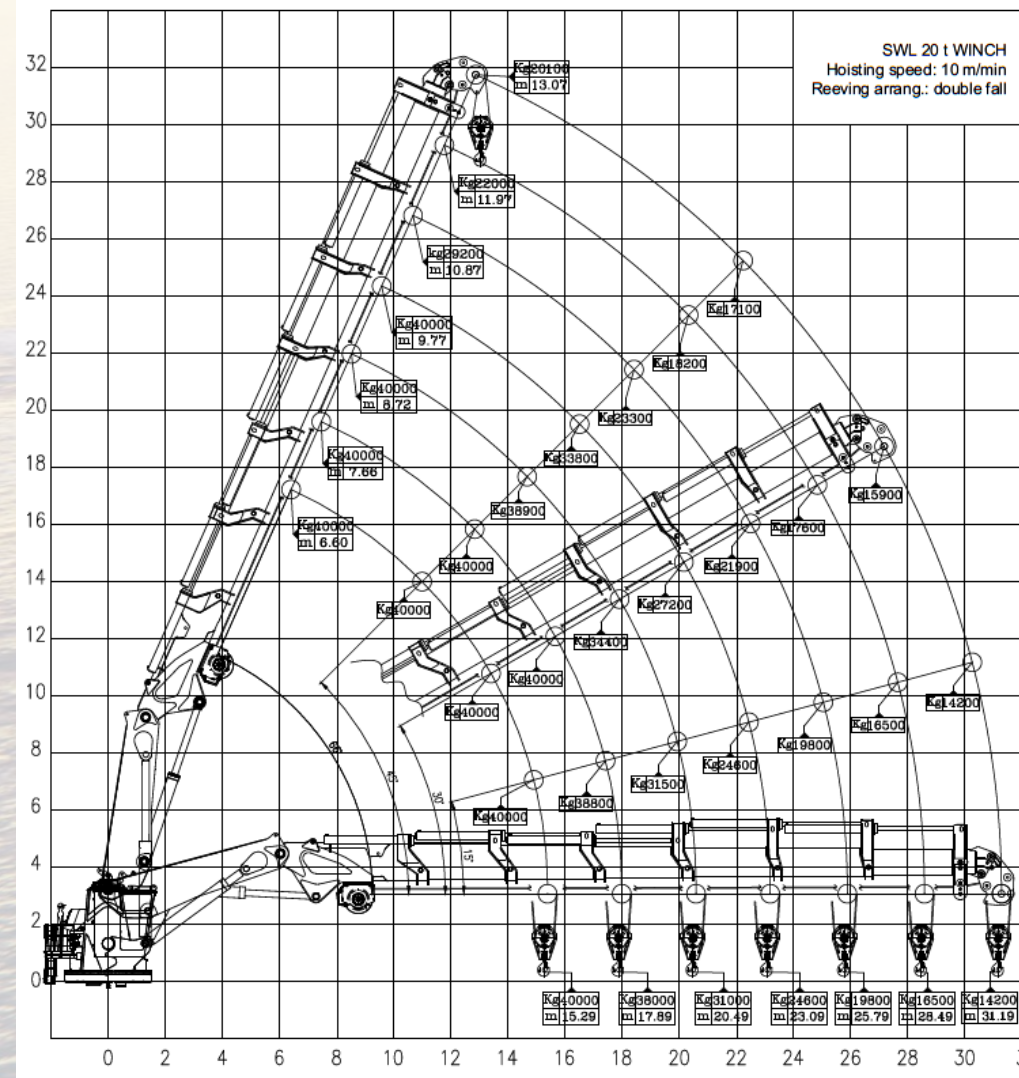
**Lifting capacities PS aft crane Heila HLRM 1000 / 6S - AHC (Shipboard)**

Distance from Base	20 T winch Single Fall	Distance from Base	20 T winch Double Fall	Fixed Hook
9.60 m	20.000 Kg	9.60 m	40.000 Kg	65.000 Kg
13.94 m	20.000 Kg	13.94 m	40.000 Kg	43.000 Kg
16.54 m	20.000 Kg	15.29 m	40.000 Kg	35.800 Kg
19.14 m	20.000 Kg	17.89 m	38.000 Kg	26.400 Kg
21.74 m	20.000 Kg	20.49 m	31.000 Kg	21.700 Kg
24.44 m	17.800 Kg	23.09 m	24.600 Kg	17.800 Kg
27.14 m	15.300 Kg	25.79 m	19.800 Kg	15.300 Kg
29.88 m	13.500 Kg	31.19 m	14.200 Kg	13.500 Kg

**Lifting capacities midships crane Heila HLRM 90.4S**

Distance from Base	4 T winch Single Fall	Fixed Hook
4.82 m	5.000 Kg	17.390 Kg
6.72 m	5.000 Kg	12.990 Kg
8.72 m	5.000 Kg	9.370 Kg
10.72 m	4.350 Kg	7.000 Kg
12.72 m	3.400 Kg	5.620 Kg

Heila HLRM 1000/6S



**VAN STEE OFFSHORE**  
 Nieuwe Vissershaven 13 • 8861 NX Harlingen • The Netherlands  
 Tel. +31 (0) 653663292  
 info@vansteeoffshore.com • www.vansteeoffshore.com

